



CE

Leenova[®]
Food Processing Machinery

AN ISO 9001:2015 CERTIFIED COMPANY



*To increase
Productivity with
innovative &
Reliable Products*

**Food Processing Machinery &
Hotel Catering Equipment**

Ultimate Solution for Kitchen



AN ISO 9001:2015 CERTIFIED COMPANY

Let's Start

Dear Sir,

We 'Leenova Food Processing Machinery', Established in the year 2006, are Highly Recognized as the Trusted CE Certified & ISO 9001:2015 Certified Manufacturer, Supplier and Service Provider of Kitchen Equipment & Accessories such as Commercial Kitchen Equipment & Restaurant Kitchen Equipment. These are

Manufactured using the Finest Grade Raw-Material and sophisticated technology at our Hi-tech

Manufacturing Unit. We are using

Finest Quality Materials, These Cooking Utensils are Highly Appreciated Among our Esteemed Customers as they are easy to clean and Maintain.

These Products are Available in all the Standard Sizes Keeping in mind our Customer's Convenience.



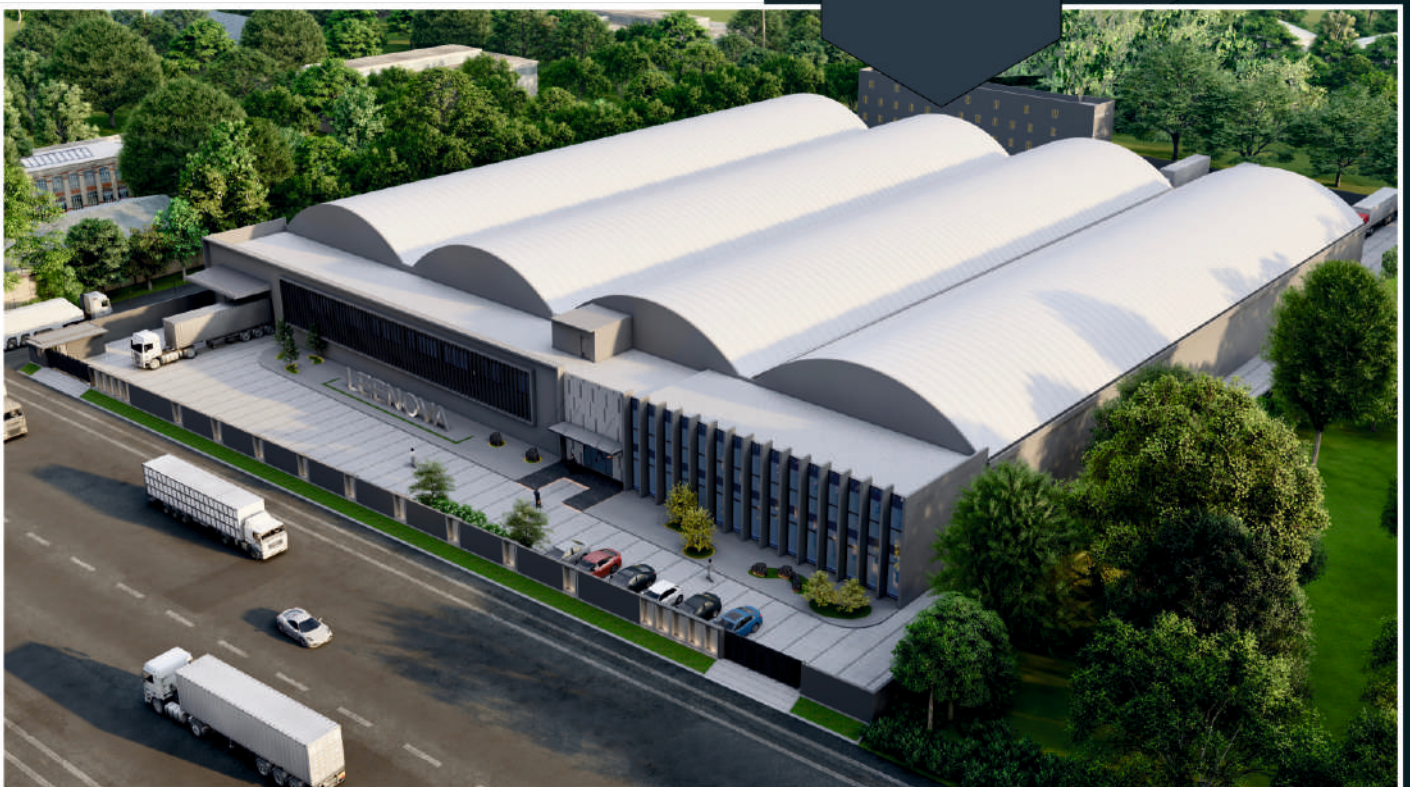
Our Offered Assortment is Widely Appreciated among our Esteemed Clients due to Their easy to use, low Maintenance, Sturdiness, high Durability and Corrosion Resistance. Keeping in mind the Various Requirements of Clients, We are Offering our wide Range of Products as Per their varied Requirements. Furthermore, these Products can be availed by Clients from us at the Most Reasonable Price.

Truly yours,

For, Leenova Kitchen Equipments Pvt. Ltd.

Core Values

- Innovation
- Quality
- Commitment
- Customer Satisfaction
- Honesty
- Relationship for Life



Gravy Machine

Gravy machine used To Make punjabi gravy, Pulp & juice from all green vegetable like tomato, onion, garlic, palak, green peas, beatroot, karela etc. Wet dal crush for idali, dosa, khaman, dalwada, juice from green alva(aml) pulp from aloe vera to make powder & groundnut & dry fruits.

MODEL	CHAMBER SIZE	WEIGHT	LENGTH	WIDTH	HEIGHT	CAPACITY (Per Hour)
1HP GRAVY	5X3	24	18	12	18	10-15 KG
2HP REG. GRAVY	7X3	36	20	15	27	35-40 KG
2HP DLX	7X3	37	21	15	27	35-40 KG
3HP SUPER DLX	8X4	40	21	15	28	100-130 KG
3HP JUMBO	9X3	42	23	16	29	100-150 KG
5HP GRAVY	12X4	64	23	16	33	200-300 KG
7HP GRAVY	14X6	140	34	24	45	600-700 KG

2 In 1 Pulverizer

Our commercial dry grinder are used for grinding different types of products like spices, sugar, leaves, herbal products, cattle and poultry feeds, icing sugar, custard powder, instant food, food colors and allied food production.



MODEL	CHAMBER SIZE	WEIGHT	LENGTH	WIDTH	HEIGHT	CAPACITY (Per Hour)
2HP 2IN1 REGULAR	10X4	45	24	12	34	12 - 15 KG
2HP 2IN1 DELUXE	10X4	46	24	12	34	12 - 15 KG
3HP 2IN1 REGULAR	10X5	51	25	13	38	20 - 25 KG
3HP 2IN1 DELUXE	10X5	54	25	13	38	20 - 25 KG
3HP 2IN1 JUMBO	10X6	61	25	17	43	25 - 30 KG
3HP 2IN1 (JUMBO) DOUBLE CHAMBER	10X6 + 8X4	74	29	18	44	30 - 32 KG
5HP 2IN1	12X6	95	27	22	47	30 - 35 KG
5HP 2IN1 DOUBLE CHAMBER	12x6 + 8x4	96	30	22	47	40-45 KG
7.5HP 2IN1 DOUBLE CHAMBER	13x7 + 8x4	170	41	26	56	65-70 KG

M. S. Pulverizer

Our commercial dry grinder are used for grinding different types of dry products like spices, salt, garlic powder, sugar, leaves, cattle and poult feeds Harbel products, custard powder, food colors and allied food production.



MODEL	CHAMBER SIZE	WEIGHT	LENGTH	WIDTH	HEIGHT	CAPACITY (Per Hour)
8" MS PULVERIZER	8X4	37	27	16	33	15 - 20 KG
10" MS PULVERIZER	10X4	45	27	16	34	25 - 30 KG
10" SS PULVERIZER	10X4	40	27	16	34	25 - 30 KG
10" MS PULVERIZER (ALU. CHAMBER)	10X6	50	26	16	35	30 - 35 KG
10" MS PULVERIZER ALU. DOUBLE CHAMBER	10X6 + 8X4	54	41	19	40	35 - 40 KG
12" MS PULVERIZER	12X5	61	32	18	40	40 - 50 KG
14" MS PULVERIZER	14X7	135	50	22	57	70 - 80 KG

MS - Blower Type Pulverizer

Used to Grinde all type of Spices



CHAMBER SIZE	10 x 5
WEIGHT	64
LENGTH	51
WIDTH	22
HEIGHT	47
CAPACITY (Per Hour)	30-35 KG

Masala Grinding Machine

Used to Grinde Red Chilli, Turmeric, Cumin Coriander etc.



HP	3
PHASE	Single
CHAMBER SIZE	8 x 10
WEIGHT	83
LENGTH	36
WIDTH	16
HEIGHT	35
CAPACITY (Per Hour)	30-40 KG

Rice Mill Machine

MODEL	Single	Combo
WEIGHT	52	70
LENGTH	28.5	49.5
WIDTH	16	16
HEIGHT	30	43.5
MOTOR	3 HP	3 HP
CAPACITY (PER Hour)	60-70 Kg.	100-120 Kg.



Single



Combo

Fully Automatic Flour Mill

Flour mill is used to grind flour from grains like wheat, rice, pearl millet, jowar, Corn etc.



MODEL	CHAMBER SIZE	WEIGHT	LENGTH	WIDTH	HEIGHT	CAPACITY (Per Hour)
1HP 5KG. HOPPER	7X4	45	19	14	33	7 - 9 KG
2HP 5KG. HOPPER	9X4	50	20	15	35	12 - 15 KG



Table Top Flour Mill



POPULAR ROUND MODEL



DIAMOND SQUARE MODEL

MODEL	Popular Round	Popular Round	Diamond Square	Diamond Square
HP	1	1.25	1	1.25
WEIGHT	26.5	29	27.5	30
LENGTH	13	13	13	13
WIDTH	10	10	10	10
HEIGHT	24	24	24	24
HOPER	3 Kg	3 Kg	3 Kg	3 Kg
CAPACITY (PER Hour)	5-6 Kg.	7-8 Kg.	5-6 Kg.	7-8 Kg.

Heavy Duty Mixer Machine

Heavy Duty Mixer Machine Specially Used For Gravy of all type Vegetable, Wet and Dry Grinding of Grain and Nut Grinding (Kaju-Katri) Etc.

Round Model



MODEL	2 LTR	3 LTR	5 LTR	10 LTR	14 LTR
HP	0.5	1.5	1.5	2	3
RPM	2880	2880	2880	2880	2880
WEIGHT	11	27	30	37	47
LENGTH	9	10	10	11	15
WIDTH	8	14	14	15	16
HEIGHT	20	23	24	31	38

Tilting Model



MODEL	5 LTR.	10 LTR.	14 LTR.
HP	1.5	2	3
RPM	2880	2880	2880
WEIGHT	36	41	51
LENGTH	22	23	24
WIDTH	15	17	19
HEIGHT	38	41	51

V-Belt Model



MODEL	10 LTR.	15 LTR.	20 LTR.
HP	1	1.5	2
RPM	1440	1440	1440
WEIGHT	45	50	60
LENGTH	25	27	30
WIDTH	14	15	19
HEIGHT	25	26	29

Onion Slicer Machine

Onion Slice Machine used to Slice Cutting

HP	0.5
WEIGHT	41
LENGTH	25
WIDTH	12
HEIGHT	24
CAPACITY (Per Hour)	125 to 150 Kg.



Onion Cutting (Chopping) Machine

Onion Cutting used to chopping cutting onion and some other Vegetables.

HP	1	2
WEIGHT	25	55
LENGTH	20	23
WIDTH	15	17
HEIGHT	21	26
CAPACITY (PER HOUR)	30-40 Kg.	70-80 Kg.



Vegetable Cutting Machine

Vegetable cutting machine uses to cutting Veg. like shapes in (Square, Chips and Slice).

HP	1.0
WEIGHT	40
LENGTH	20
WIDTH	11
HEIGHT	23
CAPACITY (Per Hour)	150-200 Kg.



(REGULAR)

Vegetable Cutting Machine

Vegetable cutting machine uses to cutting Veg. like shapes in (Square, Chips and Slice).

HP	1.0
WEIGHT	45
LENGTH	21
WIDTH	11
HEIGHT	20
CAPACITY (Per Hour)	200-250 Kg.



(DELUXE)

Vegetable Cutting Machine

Vegetable cutting machine uses to cutting Vegetable like shapes in (square, Chips and slice).

HP	2.0
WEIGHT	90
LENGTH	30
WIDTH	20
HEIGHT	25
CAPACITY (Per Hour)	500-600 Kg.



Vegetable Chopping Machine

HP	1.0
RPM	1440
WEIGHT	28
LENGTH	24
WIDTH	25
HEIGHT	17
CAPACITY (PER HOUR)	100-125Kg.



Vegetable Kadukas Machine

HP	1.0
WEIGHT	28
LENGTH	12
WIDTH	18
HEIGHT	24
CAPACITY (Per Hour)	100 Kg.



Cabbage Cutter

Cabbage Cutter uses to cutting Cabbage

HP	1.0
WEIGHT	45
LENGTH	25
WIDTH	19
HEIGHT	35
CAPACITY (Per Hour)	150-200 Kg.



Garlic Bulb Breaker Machine

HP	1
WEIGHT	75
LENGTH	35
WIDTH	19
HEIGHT	43
CAPACITY (Per Hour)	80-100 Kg.



Garlic Peeler

HP	0.25
WEIGHT	14
LENGTH	10
WIDTH	9
HEIGHT	21
CAPACITY (Per Hour)	10-12 Kg.



Flour (Dough) Kneading Machine (MS Stand)



MODEL	HP	RPM	WEIGHT	LENGTH	WIDTH	HEIGHT	AVERAGE TIME
5 KG	0.5	1440	55	29	15	23	5 - 6 Minute
5 KG DELUXE	0.5	1440	46	26	15	25	5 - 6 Minute
10 KG	1	1440	105	37	19	37	8 - 10 Minute
15 KG	1	1440	110	39	21	37	8 - 10 Minute
20 KG	1.5	1440	130	43	25	40	10 - 15 Minute
25 KG	1.5	1440	135	48	28	42	10 - 15 Minute
50 KG	2	1440	165	51	27	45	15 - 20 Minute

Flour (Dough) Kneading Machine (SS Body)



MODEL	HP	RPM	WEIGHT	LENGTH	WIDTH	HEIGHT	AVERAGE TIME
2 KG	0.25	1440	16	16	13	18	2 - 5 Minute
5 KG	0.5	1440	48	29	16	26	5 - 6 Minute
10 KG	1	1440	75	35	20	33	8 - 10 Minute
15 KG	1	1440	78	36	21	34	8 - 10 Minute
20 KG	1.5	1440	100	43	26	38	10-12 Minute
25 KG	1.5	1440	108	44	27	38	10-12 Minute

Drum Type Dough Kneading Machine



MODEL	HP	RPM	WEIGHT	LENGTH	WIDTH	HEIGHT	AVERAGE TIME
7 KG	0.75	1440	40	26	14	25	2 - 5 Minute
12 KG	1.5	1440	54	31	15	30	5 - 10 Minute
20 KG	1.5	1440	73	35	19	37	5 - 10 Minute
30 KG	1.5	1440	103	46	20	38	15- 20 Minute
50 KG	2	1440	145	54	21	38	15 - 20 Minute

Flour Kneading with Dough Ball Making Machine



MOTOR	1.5 HP
LENGTH	45
WIDTH	16
HEIGHT	30
WEIGHT	81
CAPACITY (Per Hour)	1500-2000 Piece
BOWL SIZE	2-3 Kg.
KNEADING CAPACITY	10 Kg.

Dough Ball Cutting Machine Electric



LENGTH	45
WIDTH	16
HEIGHT	30
WEIGHT	81
MOTOR	0.5 HP
CAPACITY (Per Hour)	1000-2500 Piece
BALL SIZE	20g to 50g
GEAR BOX	STANDARD

Dough Ball Making Machine (Waram Type)



WARAM	Single	Double
MOTOR	1 HP	1.5 HP
WEIGHT	59	88
LENGTH	30	27
WIDTH	16	21
HEIGHT	31	37
CAPACITY (Per Hour)	1500-2000 Piece	2500-6000 Piece



Roti Pressing Machine

it is uses to make Bhakhri, Chapati, Puri, Thepla



Capacity	: 800 to 1000/Hour
Machine Size	: 14 x 26 x 18 (Inch)
Machine Weight	: 110 kg.
Total Power Use	: 2 Unit / Hour
Total Heating Element	: 2700 Watt
Motor	: 0.5 HP
Electric Supply	: 220 V Single Phase
Electrical Motor	: Godrej / Crompton
Electrical Wire	: RR cable Or Havells
Electrical Parts	: L & T, Schneider or Abb
Electric Connection	: 3 HP
Material	: Stainless Steel

Automatic Roti Making Machine (Small)



Capacity	: 500 to 600/hour
Chapati Baking	: Three Layers Technology
Gas Consumption	: 2 Kg/Hour
Gas Connection	: LPG & PNG
Gas Safety	: Auto Cut Off Valve System
Machine Dimension	: 2.2(w) x 4(L) x 4.5(h) Feet
Weight of Machine	: 300 Kg
Total Power Use	: 2 Unit / Hour
Total Heating Element	: 2500 Watt
Motor	: 0.5 HP
Electric Supply	: 220 V Single Phase
Electrical Motor	: Godrej or Crompton
Electrical Wire	: RR cable Or Havells
Bearings	: Timken or SKF
Baking Conveyor	: SS 304
All Contact Parts	: SS 304 & Ceramic Coating

Automatic Roti Making Machine (Big)



Capacity	: 800 to 1000/Hour
Chapati Baking	: Three Layers Technology
Gas Consumption	: 2.5 Kg/Hour
Gas Connection	: LPG & PNG
Gas Safety	: Auto Cut Off Valve Sys.
Machine Dimension	: 2.2'(w) x 5.2'(L) x 4.5'(h)
Weight of Machine	: 380 Kg
Total Power Use	: 2 Unit / Hour
Total Heating Element	: 2500 Watt
Motor	: 0.5 HP x 2
Electric Supply	: 220 V Single Phase
Electrical Motor	: Godrej or Crompton
Electrical Wire	: RR cable Or Havells
Bearings	: Timken or SKF
Baking Conveyor	: SS 304
All Contact Parts	: SS 304 & Ceramic Coating



Besan Mixing Machine

Besan Mixing Machine Uses To Make Roti, Farsan Besan Mixing

MODEL	5 Kg.	10 Kg.	15 Kg.	20 Kg.
HP	0.5	1	1	1.5
RPM	1440	1440	1440	1440
WEIGHT	65	85	90	110
LENGTH	21	27	28	30
WIDTH	15	20	22	25
HEIGHT	33	39	41	41
AVG. TIME (MINUTE)	8-10	10-12	12-14	15-18



FLOWER TYPE



L TYPE

Farsan (Namkeen) Machine

Farsan Machine Uses To Make Farsan Like Sev, Gathiya, Papdi, Fulawdi, Bundi Etc.



MODEL	7"	9"	10.5"
HP	0.5	1	2
RPM	1440	1440	1440
WEIGHT	55	80	137
LENGTH	40	46	61
WIDTH	11	13	16
HEIGHT	33	38	39
CAPACITY (Per Hour)	60-70 Kg.	100-150Kg.	250-300Kg.

Nylon Sev Machine

Nylon Sev Machine Uses To Make Nylon Sev & Regular Sev



MODEL	
HP	1.5
RPM	1440
WEIGHT	130
LENGTH	55
WIDTH	21
HEIGHT	72
CAPACITY (Per Hour)	40-50 Kg.

Fafda Machine

MODEL	SMALL	JUMBO
HP	0.25	0.5
WEIGHT	16	26.5
LENGTH	18	18
WIDTH	09	12
HEIGHT	16	20
GEAR	-	STANDARD
CAPACITY (Per Hour)	30-40 Kg.	55-70 Kg.



Electric Kadai

Electric Kadai (Table Top)

Its uses for Fry, like Namkin, Fryms, Samosa, Chips etc.



MODEL	WEIGHT	LENGTH	WIDTH	HEIGHT	CAPACITY
16"	14	19	19	19	6 Ltr.
18"	16	22	22	19	8 Ltr.
20"	18	25	25	19	10 Ltr.
22"	21	27	27	19	15 Ltr.
24"	23	29	29	19	18 Ltr.
26"	25	31	31	19	20 Ltr.
28"	31	33	33	19	25 Ltr.

Electric Kadai with Stand

Its uses for Fry, like Namkin, Fryms, Samosa, Chips etc.



MODEL	WEIGHT	LENGTH	WIDTH	HEIGHT	CAPACITY
16"	17	19	19	32	6 Ltr.
18"	20	22	22	32	8 Ltr.
20"	21	25	25	32	10 Ltr.
22"	25	27	27	32	15 Ltr.
24"	27	29	29	32	18 Ltr.
26"	29	31	31	32	20 Ltr.
28"	35	33	33	32	25 Ltr.

Namkeen Masala Mixer (Ribbon Blender)

Namkeen Masala Mixer uses to mixing different type of spices, Powder, Fryms, Namkeen and Pickels etc.

1.5 Feet / 2 Feet



Ribbon Blender
3 Feet / 5 Feet

MODEL	1.5 Feet	2 Feet	3 Feet	5 Feet
HP	0.5	0.5	1.5	2
RPM	1440	1440	1440	1440
WEIGHT	50	64	155	195
LENGTH	36	39	65	85
WIDTH	16	19	27	29
HEIGHT	27	29	45	45
DRUM SIZE	18 x 10 x 12	24 x 12 x 14	36 x 20 x 22	60 x 20 x 22
DRUM CAPACITY	5-10 Kg.	15-20 Kg.	40-50Kg.	80-100Kg.

Coating Pan/Flavoring Pan Machine

MODEL	Running	Tilting	Tilting	Running
HP	0.5	0.5	1	1
RPM	1440	1440	1440	1440
WEIGHT	88	66	90	162
LENGTH	42	41	48	68
WIDTH	19	23	34	37
HEIGHT	38	46	50	51
DRUM SIZE	18" x 18"	18" x 18"	24" x 24"	32" x 32"
DRUM CAPACITY	10-15 Kg.	10-15 Kg.	20-25 Kg.	30-40 Kg.



Coating Pan/Flavoring Pan Machine

Potato Peeler Machine

Potato Peeler Machine uses to Remove upper layer of potato and also in papaya.

5 Kg. 10 Kg. 15 Kg. 20 Kg. 25 Kg. 50 Kg.

MODEL	5 Kg.	10 Kg.	15 Kg.	20 Kg.	25 Kg.	50 Kg.
HP	0.5	0.5	1.0	1.5	1.5	3
RPM	1440	1440	1440	1440	1440	1440
WEIGHT	31	45	70	72	78	134
LENGTH	27	28	30	31	33	48
WIDTH	14	16	18	19	20	28
HEIGHT	28	32	36	39	43	45
AVG. TIME (MIN.)	2-3	2-3	4-5	6-7	6-7	7-8

Potato Wafer Machine

It is used to make wafers from potato, its Cutting in different type like plane wafer, lining wafer, kadukas (khaman) cutting.

HP	0.5
RPM	1440
WEIGHT	50
LENGTH	20
WIDTH	14
HEIGHT	27
CAPACITY (Per Hour)	200-250 Kg.

Finger Chips Machine with Motor

(Standard Gear Box)

HP	0.5
RPM	1440
WEIGHT	46
LENGTH	25
WIDTH	13
HEIGHT	20
CAPACITY (Per Hour)	200-250 Kg.

Banana Wafer Machine

It is uses to cutting banana wafers, Its cutting in different type like ROUND, OVEL, LONG PATTa.

Regular Speed Controller

MODEL	REGULAR	SPEED CONTROLLER
HP	1	1
WEIGHT	45	55
LENGTH	36	43
WIDTH	13	15
HEIGHT	24	34
CAPACITY (Per Hour)	250-300 Kg.	300-350 Kg.

Dryer Machine (Tilting)

Dryer Machine uses to Remove Extra oil & water (EX. Potato slice, Namakeen, Wet Dal etc.)

HP	1.0	1.5
BOWL SIZE	12 x 14	16.5 x 16.5
BOWL CAPACITY	10-15 Kg.	25-30 Kg.
WEIGHT	75 Kg.	107 Kg.
LENGTH	31	32
WIDTH	25	26
HEIGHT	46	46

Dryer Machine (Regular)

Dryer Machine uses to Remove Extra oil & water (EX. Potato slice, Namakeen, Wet Dal etc.)

HP	1.0
BOWL SIZE	12 x 14
BOWL CAPACITY	10-15 Kg.
WEIGHT	95
LENGTH	36
WIDTH	24
HEIGHT	29

Khichi Making Machine




MODEL	10 Kg.	15 Kg.	20 Kg.
HP	1.5	1.5	2
LENGTH	26	27	28
WIDTH	23	23	24
HEIGHT	42	42	45
WEIGHT	107	115	129

Papad Machine



- Full Steel Body
- Maintenance Free
- Easy to Operate

HP	0.5
RPM	1440
WEIGHT	63
LENGTH	27
WIDTH	18
HEIGHT	30
CAPACITY (PER DAY)	50-60 Kg.

Dough Sheeter With Dough Kneader Machine



SHEET WIDTH 8" SHEET THICKNESS 12mm

HP	WEIGHT	LENGTH	WIDTH	HEIGHT
1.5	94	44	19	30

Dough Sheeter Machine



SHEET WIDTH 8" SHEET THICKNESS 12mm

HP	WEIGHT	LENGTH	WIDTH	HEIGHT
1.5	70	27	19	30

Samosa Dough Sheet Machine



ROLLER 18" THICKNESS : Adujustable

HP	WEIGHT	LENGTH	WIDTH	HEIGHT
1.0	72	37	18	25

Automatic Samosa Making Machine

HP	2.0
WEIGHT	92
LENGTH	27
WIDTH	12
HEIGHT	32
CAPACITY (Per Hour)	2500-3000



Panipuri Machine

HP	0.5
WEIGHT	105
LENGTH	54
WIDTH	38
HEIGHT	22
CAPACITY (Per Hour)	5000 Piece



Hand Dry Fruit Chips Machine



MODEL	SMALL	BIG	WITH MOTOR
HP	-	-	0.25
RPM	-	-	1440
WEIGHT	1.5	5	21
LENGTH	8	11	19
WIDTH	5	7	8
HEIGHT	7	10	19

Dryfruit Powder Machine (Three Phase)



HP	1.5
RPM	1440
WEIGHT	43
LENGTH	17
WIDTH	17
HEIGHT	26
CAPACITY (Per Hour)	150-200 Kg.

Dryfruit Tukda Cutting

it is uses to make pieces from Peanut, Almond, Cashew, Pista & Other Dry Fruit



HP	0.25	WEIGHT	28
RPM	1440	LENGTH	17
GEAR	STANDARD	WIDTH	13
CAPACITY (Per Hour)	30-35 KG.	HEIGHT	21

Dryfruit Chips & Powder

uses to make Slice & Powder from Peanut, Almond, Cashew, Pista & Other Dry Fruit



HP	1	WEIGHT	30
RPM	960	LENGTH	22
GEAR	-	WIDTH	16
CAPACITY (Per Hour)	25-30 KG.	HEIGHT	22

Kaju Musti Machine

it is uses to make Maska, Mava, Penda Polish, Chota, Kaju Katri etc.



HP	1	WEIGHT	168
RPM	960	LENGTH	37
GEAR	-	WIDTH	30
CAPACITY (Per Hour)	-	HEIGHT	41

Milk Mawa (Khoaya) Machine (Gas)

Bowl
SS 304
Bowl Plate
18 MM



MODEL	Regular	Tilting
HP	0.5	0.5
WEIGHT	180	200
LENGTH	50	50
WIDTH	31	31
HEIGHT	40	40
BOWL CAPACITY	120 Ltr.	120 Ltr.

Maska Shreading

HP	1.0
RPM	1440
WEIGHT	94
LENGTH	43
WIDTH	17
HEIGHT	47
CAPACITY (Per Hour)	150-200 Kg.



Shrikhand Mixing



MODEL	30 KG	40 KG	50 KG
HP	1	1	1.5
WEIGHT	75 Kg.	81Kg.	88Kg.
LENGTH	32	32	32
WIDTH	20	22	25
HEIGHT	36	38	40

Halwa Machine



MODEL	2 FEET	3 FEET	4 FEET	5 FEET
HP	0.5	1	1.5	2
WEIGHT	200 Kg.	250Kg.	300Kg.	350Kg.
LENGTH	48	56	68	88
WIDTH	30	38	50	62
HEIGHT	43	45	49	49
BOWL CAP. (Kg.)	20-25	30-35	50-60	70-80

Laddu Crusher Machine



HP	WEIGHT	LENGTH	WIDTH	HEIGHT
1	50	31	19	28

Laddu Making Machine



CAPACITY
(Per Hour)
1200 TO 1500

HP	WEIGHT	LENGTH	WIDTH	HEIGHT
1.5	157	58	26	42



Live Steam Dhokla Machine



MODEL	6 TRAY	8 TRAY	10 TRAY	12 TRAY
WEIGHT	43	48	51	58
LENGTH	24	24	24	24
WIDTH	24	24	24	24
HEIGHT	40	45	47	52
TRAY SIZE : 14 x 18 x 1.25				

Nylon Khaman Machine



MODEL	6 TRAY	8 TRAY	10 TRAY
WEIGHT	56	68	75
LENGTH	28	28	28
WIDTH	24	24	24
HEIGHT	52	56	66
TRAY SIZE : 18 x 18 x 2.5			

Wet Dal Machine



MODEL	WITH MOTOR & STAND	WITHOUT MOTOR & STAND
HP / RPM	1 / 1440	-
WEIGHT	56	21
LENGTH	21	20
WIDTH	13	10
HEIGHT	32	18
CAPACITY (Per Hour)	35-40 KG	

Wet Grinder (Regular)

Wet Grinder uses to make a wet Paste (Khira). (Ex. Wet Dal, Rice, Idly, Dosa etc.)



MODEL	2Ltr.	3Ltr.	5Ltr.	7Ltr.	10Ltr.
HP	0.25	0.25	0.5	1	1
WEIGHT	45	60	110	127	150
LENGTH	22	23	30	32	33
WIDTH	15	16	19	21	23
HEIGHT	26	32	36	37	40

Wet Grinder (Tilting)

Wet Grinder uses to make a wet Paste (Khira). (Ex. Wet Dal, Rice, Idly, Dosa etc.)



MODEL	5 Ltr.	7 Ltr.	10 Ltr.	15Ltr.	20Ltr.
HP	1	1	1.5	1.5	2
WEIGHT	89	90	109	160	175
LENGTH	30	32	33	35	37
WIDTH	19	21	23	25	28
HEIGHT	36	37	40	45	48

Chatani Machine

Its used for make paste like green chily chatani, boild potato mash etc.

MODEL	WITH MOTOR & STAND	W/O MOTOR & STAND
HP	1.0	-
RPM	1440	-
WEIGHT	49	14
LENGTH	18	15
WIDTH	13	10
HEIGHT	26	11



Kadukas Bhuka Machine

it is uses to make blade chips. (Ex. carrote, lauki, beatroot, cabbage etc.)

MODEL	WITH MOTOR & STAND	W/O MOTOR & STAND
HP	0.5	-
RPM	1440	-
WEIGHT	43	13
LENGTH	19	17
WIDTH	14	14
HEIGHT	32	18



Manchurian Ball Cutting Machine

MODEL	AUTOMATIC
HP	0.5
WEIGHT	77
LENGTH	38
WIDTH	21
HEIGHT	39
CAPACITY (PER HOUR)	1400 to 1500 Ball
GEAR BOX	Standard



Hand Operated Manchurian Ball Cutting Machine

MODEL	MANUAL
HP	-
WEIGHT	24
LENGTH	47
WIDTH	38
HEIGHT	45
CAPACITY (PER HOUR)	-



Sugar Cane Cleaning Machine



HP	1.0	LENGTH	16
WEIGHT	65	WIDTH	17
CAPACITY (PER Hour)	200-250 Glass	HEIGHT	37

Sugar Cane Juice Machine (Compaq)



HP	0.5	LENGTH	22
WEIGHT	46	WIDTH	8
CAPACITY (PER Hour)	200-250 Glass	HEIGHT	17

Sugar Cane Juice Machine (Eco)



FUNCTION : Overload Tripping & Reverse Forward System Available
ROLLER : 4" (SS 304 with 3 Roller)
GEAR : Standard Gear Box

HP	1.5	LENGTH	27
WEIGHT	76	WIDTH	17
CAPACITY (PER Hour)	200-250 Glass	HEIGHT	30

Sugar Cane Juice Machine (Premium)



FUNCTION : Overload Tripping & Reverse Forward System Available
ROLLER : 4" (SS 304 with 3 Roller)
GEAR : Standard Gear Box

HP	1.5	LENGTH	21
WEIGHT	56	WIDTH	18
CAPACITY (PER Hour)	200-250 Glass	HEIGHT	22.5

Sugar Cane Juice with Motor (Engine Type)



HP	1.5	LENGTH	30
WEIGHT	69	WIDTH	18
CAPACITY (PER Hour)	200-250 Glass	HEIGHT	43

Sugar Cane Juice Without Motor (Engine Type)



HP	-	LENGTH	32
WEIGHT	59	WIDTH	18
CAPACITY (PER Hour)	200-250 Glass	HEIGHT	43

Sugar Cane Juice Instant Chiller Machine

Compressor : 1.75 Kcal/WH/651V
Condensation Fan : Hicool
Gas - 134 No. Dryer : Denfos
Water Pump : 75 GDP (24v)
Voltage : 220 - 230 V
Start Power Load : 5 AMP
Size : H 40" x L 32" x W 24"
Weight : 70Kg (SS-304)
Juicer Tank Capacity : 3 liter
Glycol Tank :
25 liter (Use 20 liter)
Temperature Meter :
Sub Zero Touch Screen



Carrot (Fruit) Juice Machine

It's used to extract juice from pineapple, Apple, grapes, carrots, pomegranate, Tomato, Carrots and Green Vegetable etc.

MODEL	SMALL	MEDIUM	BIG
BOWL SIZE	0.25	0.5	0.75
RPM	2880	2880	2880
WEIGHT	11	14	20
LENGTH	9	11	12
WIDTH	9	11	12
HEIGHT	14	17	19
CAPACITY (At a Time)	2 GLASS	4 GLASS	8 GLASS



Mango Pulp Machine

MODEL	SMALL	MEDIUM	BIG
HP	1	1.5	2
WEIGHT	70	95	135
LENGTH	34	43	53
WIDTH	19	22	26
HEIGHT	34	39	40
CAPACITY (PER Hour)	50-100	200-250	400-500



Orange Juice Machine

It's used to extract juice from Oranges, Mosambi, Anar, Pineapple, Grapes, Sweet lemon and other fruits.

HP/RPM	0.5/1440
WEIGHT	28
LENGTH	17
WIDTH	11
HEIGHT	24
CAPACITY	25-30 KG



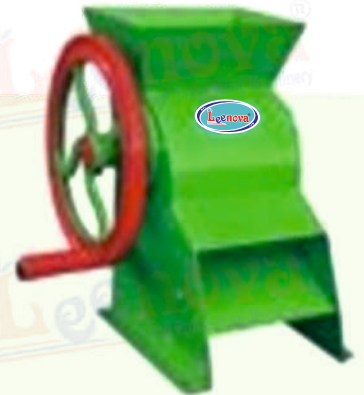
Ice Crusher



RPM	2200
POWER	300W
WEIGHT	4
LENGTH	17
WIDTH	7
HEIGHT	13
CAPACITY (Per Hour)	30-40 KG

Ice Tukda Machine (Manual)

MODEL	SMALL	BIG
WEIGHT	8	10
LENGTH	17	18
WIDTH	14	15
HEIGHT	16	18



Tray (Dish Packing) Sealer Machine



5 Khana
8 Khana

WEIGHT	22
LENGTH	23
WIDTH	16
HEIGHT	12
COIL	700 WATT
CONTAINER	5 & 8
Die	2

GLASS (CUP) PACKING MACHINE



MODEL	SINGLE	DOUBLE
WEIGHT	10.5	12.6
LENGTH	19	20
WIDTH	10	12
HEIGHT	12	12
COIL	300 WATT	500 WATT

Bhaji Cutter

Its use for Cutting Palak, Methi, Green Onion etc.



Hand Chilly Cutter

It is use for chopping Green Chily, Ginger etc.



Hand Operated Sev Machine

Its used to Make Namkeen & Sev



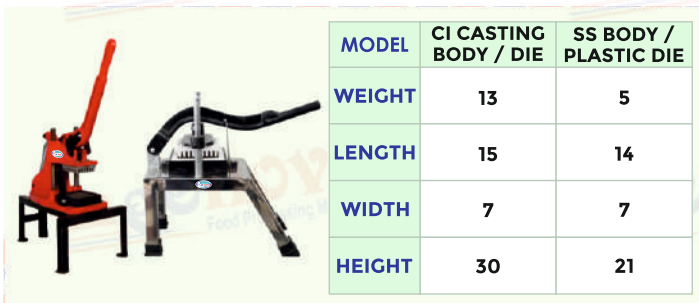
Hand Ope. Potato Slice Machine



Hand Ope. Salad Cutter Machine



Hand Operated Finger Chips Machine



Valona



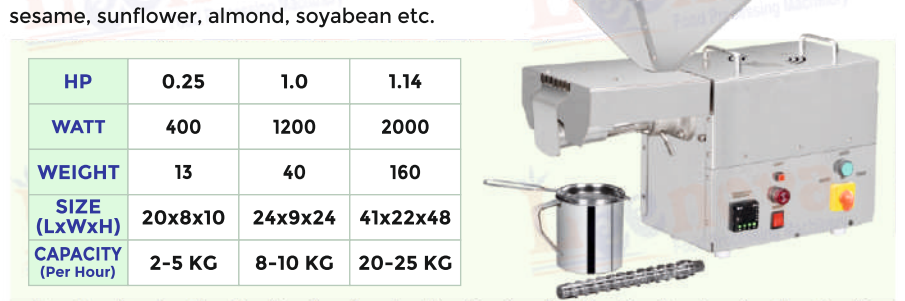
Coconut Scraper

Its uses for make coconut Paste(Chatani).



Oil Making Machine

Its Used to a home made oil from groundnut, sesame, sunflower, almond, soyabean etc.



Pizza Oven (Electric)



MODEL	10x16	12x18	18x18	18x24	24x24
WEIGHT	17	21	29	31	41
LENGTH	27	29	29	35	36
WIDTH	16	18	24	24	31
HEIGHT	14	15	15	15	15
CAPACITY	4 Pizza	6 Pizza	8 Pizza	10 Pizza	12 Pizza

Pizza Oven (Gas)



MODEL	10 x 16	12 x 18	18 x 18	18 x 24
WEIGHT	25	33	43	56
LENGTH	23	27	29	29
WIDTH	16	24	24	25
HEIGHT	20	25	26	27
CAPACITY	4 Pizza	6 Pizza	8 Pizza	10 Pizza

Sandwich Griller



MODEL	SINGLE PLATE	DOUBLE PLATE	IMPORTED	JUMBO
CHAMBER SIZE	11 x 11	11 x 11	9 x 14	15 x 15
WEIGHT	10	16	18	15
LENGTH	17	26	14	22
WIDTH	12	17	17	17
HEIGHT	10	12	8	12
CAPACITY	4 PCS	8 PCS	6 PCS	4 Pcs



Deep (French) Fryer

Deep Fryer uses to Fry like samosa, French Fry, Fryums etc.

MODEL	WEIGHT	LENGTH	WIDTH	HEIGHT
2 Ltr Electric	6	17	7	14
5 Ltr Electric	7	17	11	12
5 Ltr Ele. + Gas	8	17	11	15
14 Ltr Ele. + Gas	15	27	19	19
5 Ltr. Double T/Top	11	22	17	12
5 Ltr. Double With Stand	22	24	21	37

Garbage Crusher Machine

Garbage Crusher Machine uses to Crushing waste food in Hotel, Restaurant, Hospital, Hostel etc.

HP	1	LENGTH	22
RPM	1440	WIDTH	32
WEIGHT	50	HEIGHT	17



Popcorn Machine

It used to Make Different Flavour Popcorn

MODEL	GAS	ELECTRIC
BOWL SIZE	250-300g.	200-250g.
WEIGHT	23	17
LENGTH	23	22
WIDTH	20	16
HEIGHT	38	29




Charcoal Bar-Be-Que



MODEL	18x12x36	24x12x36	30x12x36
WEIGHT	20	25	28
LENGTH	18	24	30
WIDTH	12	12	12
HEIGHT	36	36	36

Gas Range (Cooking Range)



MODEL	SINGAL BURNER	DOUBLE BURNER	THREE BURNER
WEIGHT	35	56	90
LENGTH	24	48	72
WIDTH	24	24	24
HEIGHT	32	32	32

Chapati Bhatti



MODEL	WEIGHT	LENGTH	WIDTH	HEIGHT
18 X 36 X 12	42	40	20	12
18 X 36 X 32	50	40	20	32
24 X 48 X 12	77	52	26	12
24 X 48 X 32	90	52	26	32

Dosa Bhatti



MODEL	WEIGHT	LENGTH	WIDTH	HEIGHT
18 X 36 X 12	51	40	20	12
18 X 36 X 32	57	40	20	32
24 X 48 X 12	82	52	26	12
24 X 48 X 32	93	52	26	32

Diesel Bhatti



BLOWER	BURNER SIZE	WEIGHT	
35 No.	280 MM	66	
LENGTH	WIDTH	HEIGHT	DOME SIZE
49	15.5	28	15 x 15

SS Sink Unit



MODEL	LENGTH	WIDTH	HEIGHT
Single Sink	24	24	34
Two Sink	48	24	34
Three Sink	72	24	34

Kitchen Steel Working Table



MODEL	LENGTH	WIDTH	HEIGHT
1 - Under Self	46	24	32
2 - Under Self	46	24	32
1 - Under Self	60	24	32
2 - Under Self	60	24	32
1 - Under Self	72	24	32
2 - Under Self	72	24	32

Kitchen Steel Pick-Up (Service) Table



MODEL	LENGTH	WIDTH	HEIGHT
1 - Under Self	46	24	32
2 - Under Self	46	24	32
1 - Under Self	60	24	32
2 - Under Self	60	24	32
1 - Under Self	72	24	32
2 - Under Self	72	24	32

Service Trolley



Masala Trolley



Single Sink with Table



Soiled Dish Table



Dining Table



Fast Food Table



Rack



Masala Peti

Available in
500 Gm. & 1 Kg.



6 - Box
9 - Box
12 - Box

S.S. Tandoor



M. S. Tandoor



Stokpot Burner



Bain Marie (GN PAN)



Bain Marie (Round Bowl)



G. N. Pan & S. S. Chowki





Induction Plate



Conveyer Toaster



Pop-up Toaster



Pizza-Makeline



Waffle Baker



Bread Slicer



Deck Oven



Potato Tornado Cutter



Commercial Blender



Under Counter Freeze



4 Door Vertical Freeze



Water Cooler



Ice Cube Machine



Chopping Board



Soup Station



S.S. Soup Station



Chaffing Dish



Sizzler & Brownie Plater



Planetary Mixer



Spiral Mixer



Hand Operated Juicer



Instant Masala Grinder



Chocolate Fountain



Slush Machine



Juice Dispenser



Warming Shawcase



Hot-Pot & Tea Thermos



Delivery On Time Every Time

Manufacturer & Exporter :

Leenova
KITCHEN EQUIPMENTS PVT. LTD.

Survey No. 315 P1 & 315 P2, Plot No. 1 & 2,
Nr Umiya Industrial Zone-5,
Rajkot Gondal National Highway, At Post Ribda,
Tal. Gondal, Dist. Rajkot-360311. Gujarat (India)
☎ +91-99253 12341, 99253 12342
✉ leenovakitchenequipment@gmail.com
🌐 www.leenovakitchenequipments.com